

EVOLUTION REVIEW

Two important parts of the cell theory: 1) The cell is the basic unit of life 2) Cells come from other cells

Why is this important for the beginning of life on Earth?

Theory proved that **spontaneous generation does not** occur (happen).

A new species of finch was discovered after a drought. **What does this discovery tell us?**

When the environment changes, the population changes because of **natural selection**.

What information does fossil evidence provide about Biology?

Fossils explain what types of organisms lived **during that time (past)**.

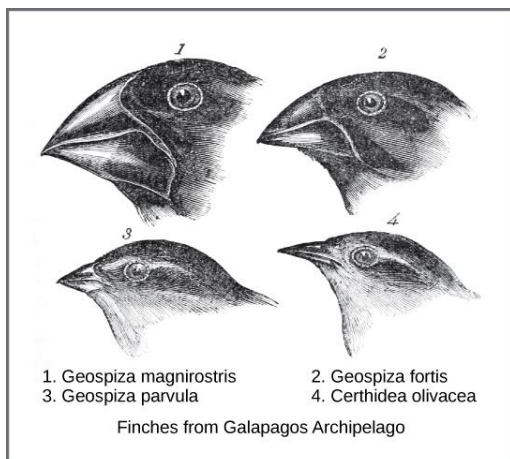
What were the results of the Miller-Urey experiment? **What does this tell us about the early Earth?**

Amino acids were formed under **harsh conditions**.

Stated Clearly:

<https://www.youtube.com/watch?v=NNijmxKGBc>

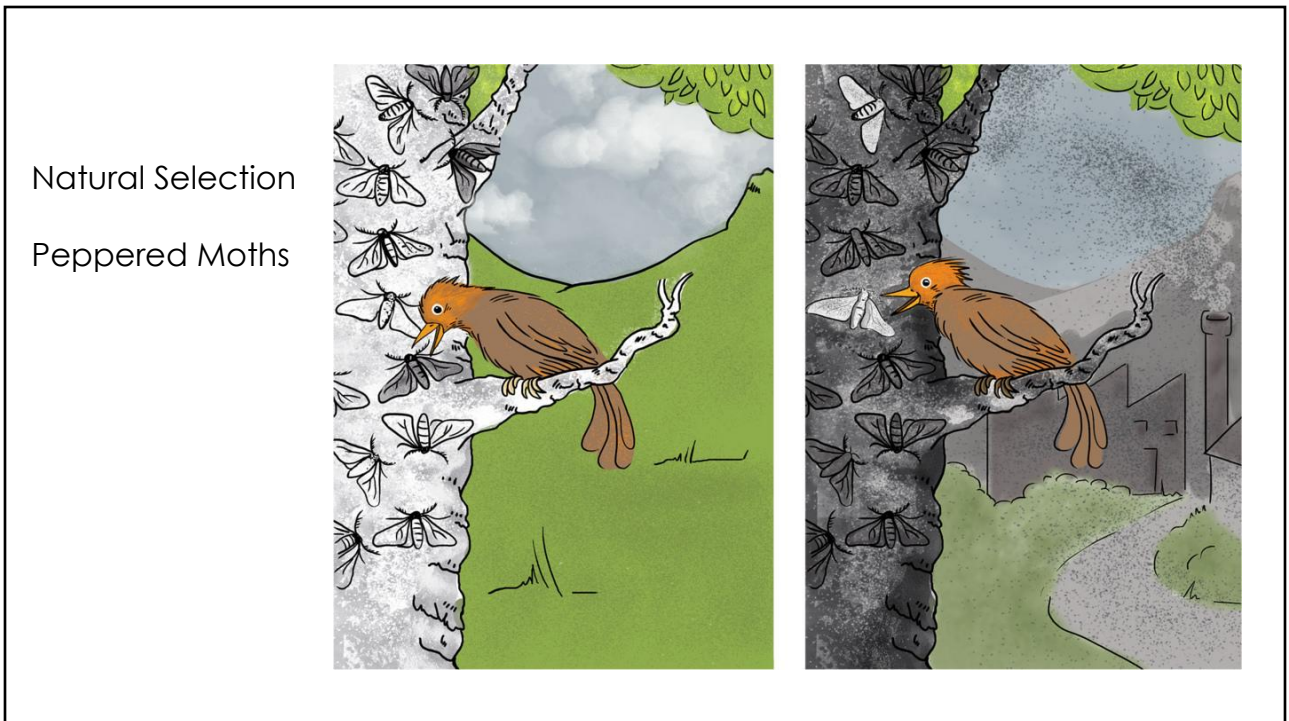
Darwin's Finches



Fossil Evidence



<p>How does the <u>endosymbiotic theory</u> indicate that a eukaryotic cell is complex?</p>	<p>Eukaryotic cells were developed by multiple entities (parts=organelles).</p>
<p>What are Darwin's four points of <u>Natural Selection</u>?</p>	<p>Endosymbiotic Theory: https://www.youtube.com/watch?v=FGnS-Xk0ZqU</p>
<p>How can new <u>species</u> form?</p>	<p>Individuals with favorable traits <u>survive & reproduce</u></p>
<p>How does the time period used for reproduction relate to <u>speciation in frogs</u>?</p>	<p>Natural Selection: https://www.youtube.com/watch?v=7VM9YxmULuo</p>
<p>How can new <u>species</u> form?</p>	<p>Behavioral, Geographic & Reproductive (Temporal) Isolation</p>
<p>How does the time period used for reproduction relate to <u>speciation in frogs</u>?</p>	<p>If they don't mate at the same time, it can lead to a barrier for breeding.</p>

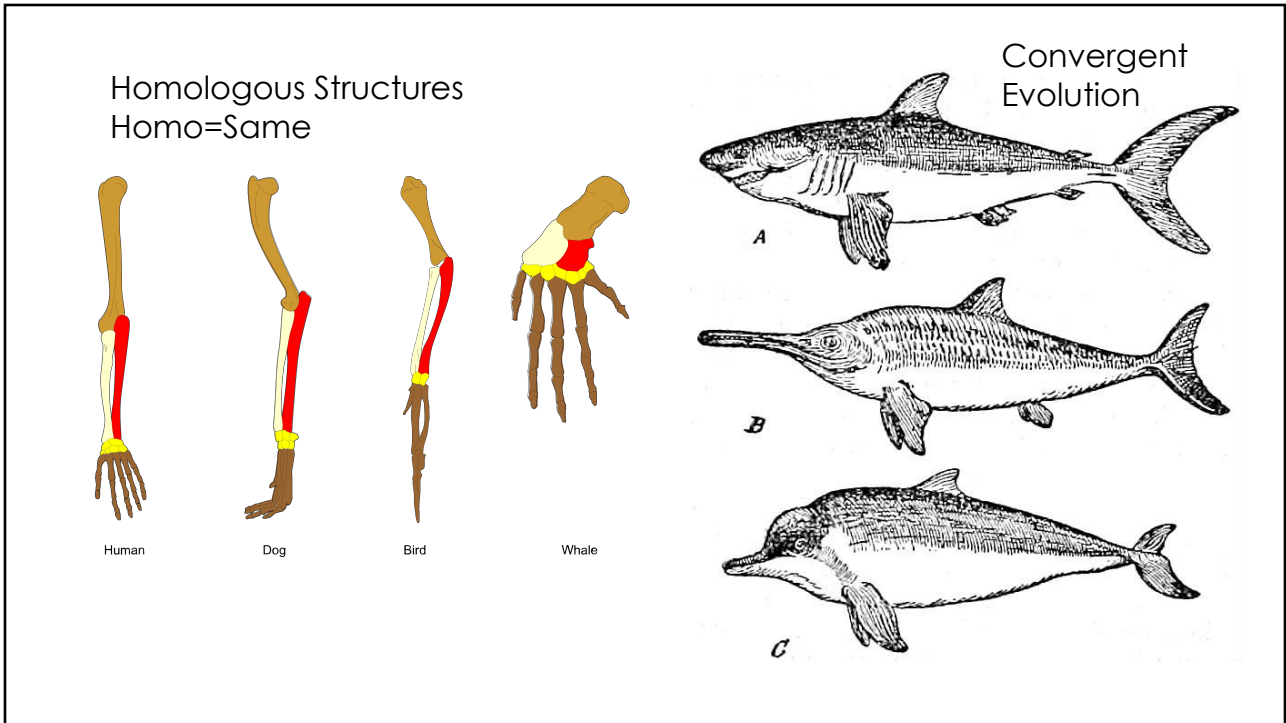


<p>Give one word to describe Evolution.</p>	<p>Change</p>
<p>Darwin's Finches each adapted to the environments of the different islands. What is this an example of?</p>	<p>Adaptive Radiation</p>
<p>Darwin's Finches probably shared a _____.</p>	<p>Common ancestor</p>
<p>A small population of fish becomes geographically isolated from the rest of the population after a dam is built. What will probably happen to the fish over time?</p>	<p>Species of fish will <u>adapt</u> to their location and <u>develop</u> different characteristics</p>
<p>VOCABULARY REVIEW: https://tinycards.duolingo.com/decks/64SoSszp/evolution https://tinycards.duolingo.com/decks/6VfDiZE/evolution-review-part-1 https://quizlet.com/_4io62t</p>	

Evolution = Change

Different Characteristics

<p>What do <u>homologous structures</u> tell us?</p>	<p>Organisms that share a common ancestor</p>
<p>Sharks, dolphins, and penguins all have adaptations to help them move through water. What is this an example of?</p>	<p>Convergent Evolution</p>
<p>True or False: There are gaps in the fossil record because not all species can be fossilized.</p>	<p>True</p>
<p>What is a vestigial structure?</p>	<p>A bone/organ that serves no function in the present (femur bone in a whale; appendix in a human)</p>



<p>What is speciation?</p>	<p>The creation of a new species</p> <p>Speciation: https://www.youtube.com/watch?v=udZUaNKXbJA</p>
<p>What is an <u>adaptation</u>? How does it relate (pertain) to evolution?</p>	<p>Adaptation is a beneficial trait that provides alternative ways to adjust to a changing environment.</p>
<p>True or False: Introducing new alleles into a population is called <u>gene flow</u>.</p>	<p>True</p>
<p>THINGS TO REMEMBER: **Hand sanitizer creates bacterial resistance **The flu can mutate each year because it is a virus</p> <p>AMOEBAS SISTERS VIDEOS: Natural Selection: https://www.youtube.com/watch?v=7VM9YxmULuo Speciation: https://www.youtube.com/watch?v=udZUaNKXbJA Endosymbiotic Theory: https://www.youtube.com/watch?v=FGnS-Xk0ZaU</p>	

